

ULTRA-LOW-POWER ULTRASONIC PRO WIND SENSOR (ULP PRO)

The ULP PRO Wind Sensor delivers high-accuracy wind speed and direction readings in a lightweight, ultra-efficient design. Its compact body and low power draw make it ideal for mobile units, remote stations, and solar-powered setups. Engineered for durability, it meets IPX8 standards and performs reliably in varied outdoor environments. It offers flexible integration via UART, RS485, MODBUS, and is DAVIS compatible.

Power: 3.3 - 18 VDC

Information Given:

- Wind Speed

Range: 0.5 - 45 m/s (1.12 to 100 mph)

Accuracy: 0.1 m/s at 10 m/s (0.22 in. at 22 mph)

Threshold: 1 m/s (2.24 mph)

- Wind Direction:

Range: 0- 359°

Accuracy: $\pm 1^\circ$ RMS at 10 m/s (22.37 mph)

Measurement:

- Power Consumption

(UART) 0.15 mA at 38,400 bauds, 1 Hz (5V)

(RS485) 0.25 mA at 38400 bauds, 1 Hz (5V)

Baudrate: 2,400 to 115,200 (8n1) bauds

Output rate: 0.1 to 20 Hz

Output units: m/s, Knots, or Km/h



Easy Mount - 2xM3 lateral female tripod thread UNC1/4"-20
- 3xM3 base female tripod thread UNC1/4"-20 UNC1/4"-20

Sensor: Ultrasonic Transducers (4x)

Dimensions: Diameter: 68 mm (2.68 in.)
Height: 65 mm (2.55 in.)
Weight: 200 grams (7.05 oz.)

Environmental:

- IP Protection IPX8

- Temperature Range

-15/55° C (5/131° F) if no frost

Firmware upgradable. Configurable via cable.

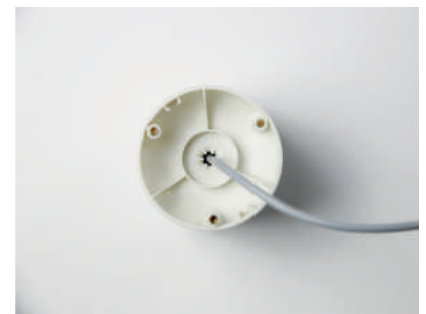
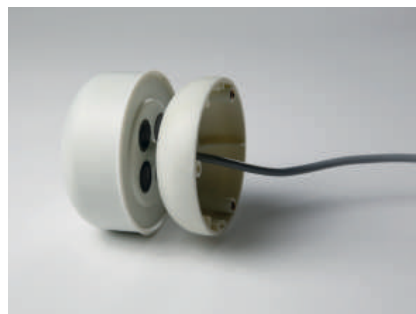
If you require a cable length longer than 20 meters (MODBUS), we can provide support. Please contact our technical support team for assistance.

Data Output:

- RS485 (NMEA 0183)/ MODBUS -Stream or Poll **SKU** CMI1019

- UART (NMEA 0183) CMI1032

- DAVIS compatible -Stream or Poll



ULP PRO

SPECS SHEET

English version 1.0
25.05.2023



Unite Trades & Technologies
FF-229, Tower-A Ansal Palam
Corporate Plaza C2 Block Palam Vihar
Phone: +91-124-4130689
website: www.utnt.in, Email: utnt@utnt.in