

Pool PRIMELAB 2.0®

THE ULTIMATE PHOTOMETER



MANY *Pool* PARAMETERS

18 WAVELENGTHS (410-940 NM)

5,5" COLOR- | HD-TOUCH-DISPLAY

QR-CODE SCANNER (REAGENTS | MEASURING POINTS)

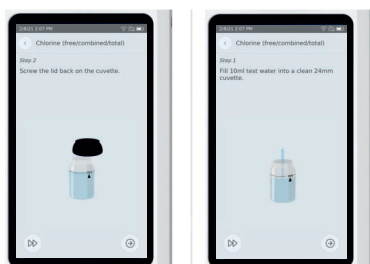
WLAN, USB*, 4G**

ELECTRODE CONNECTION
(PH | ORP | EC | TDS | TEMP)

MANY *Pool* PARAMETERS FOR EXAMPLE:

Active Oxygen | Alkalinity-M | Aluminium | Ammonium | Bromine | Chloramine | Chloride | Chlorine | Chlorine HR | Chlorine Dioxide | Copper | Cyanuric Acid | Calcium Hardness | Total Hardness | Hydrogen Peroxide | Iron | Manganese | Nitrate | Nitrite | Ozone | pH | PHMB Phosphate | Potassium | Sulphate | Urea | Zinc

ANIMATIONS



FREE SOFTWARE, APP & CLOUD



SCAN ME!



*FOR CHARGING, DATA TRANSMISSION, ELECTRODE CONNECTION AND 4G** MODEM
**VIA USB INTERNET STICK | ACCESSORIES | MAY BE SUBJECT TO A CHARGE FOR USE

PRODUCT DESCRIPTION

The next generation of photometers - the Pool PrimeLab 2.0, developed by Water-i.d.®

High-precision readings due to 18 parallel wavelengths, WiFi-USB-Bluetooth® GSM** connection, powerful software and app, synchronised data via a free cloud service, a large HD touch display and the possibility to connect electrodes are just a few features of the Pool PrimeLab 2.0. While conventional photometers only perform tests at selected wavelengths, the Pool PrimeLab can also receive data from 18 different wavelengths in parallel, covering the most important parts of the UV and IR range as well as the entire VIS range. Very narrow peaks between 390 and 950 nm enable the most accurate readings, close to the performance of a spectrophotometer.

The highly professional PrimeLab 2.0 firmware interpolates between the different wavelengths, while some parameter curves are set to use multiple wavelengths to obtain the most accurate test results. For each individual parameter method, there are step-by-step instructions in many different languages, as well as useful animations and links to user videos to ensure that the correct and proper procedure is used.

With its built-in camera, the Pool PrimeLab 2.0 offers the ability to scan QR-codes to identify sampling points set up by the user and to identify reagents with QR-code on the packaging. Advantages of these options are:

- Scanning the QR-code of a sampling site ensures that you always link the test results you receive to the correct sampling point. This shortens the testing process as the associated sampling point is automatically selected.
- Scanning QR-codes on reagent packaging prevents the wrong or even expired reagents from being used and speeds up the testing process by pre-selecting the parameter method.

Over time, water analysis has become much more than just a test. Real-time availability of reliable test results and data management are as important as the test results themselves. The Pool PrimeLab 2.0 is the ultimate in connectivity! With WiFi-USB-GSM**(via USB modem)-Bluetooth® there are several ways to connect the Pool PrimeLab 2.0 to a smartphone, tablet, computer or directly to the LabCOM® cloud. Wherever the tests are carried out, whether directly at the pool or in the laboratory - in fact anywhere - the data can be transferred easily and automatically.

POOL PRIMELAB 2.0 KITS

POOL PRIMELAB 2.0 KIT 1:

1 x Pool PrimeLab 2.0 Photometer

1 x Grey plastic case with foam insert, 4 x 24mm|10ml glass cuvettes, 1 x light protection cap, 1x 24mm cuvette adapter, 1 x plastic stirring rod, 1 x 10ml syringe, 1 x cleaning brush, 1 x microfibre cloth, 1 x charger (USB type-C), 1 x printed manual

Parameters:

Chlorine, pH, Alkalinity-M

POOL PRIMELAB 2.0 PRO-KIT 1:

1 x Pool PrimeLab 2.0 Photometer

1 x Grey plastic case with foam insert, 4 x 24mm|10ml glass cuvettes, 1 x light protection cap, 1x 24mm cuvette adapter, 1 x plastic stirring rod, 1 x 10ml syringe, 1 x cleaning brush, 1 x microfibre cloth, 1 x charger (USB type-C), 1 x printed manual

Parameters:

Chlorine, pH, Alkalinity-M

Electrodes:

ProbeBox Electrode Starter Kit pH/Temp

PARAMETERS:

You can always purchase a code to activate more parameters. PrimeLab software and app are updated via the internet and always provide you with the most up-to-date list of available parameters. So your Pool PrimeLab 2.0 always stays up to date!

At www.primelab.org you can view the latest parameter list!

POOL PRIMELAB 2.0 KIT 2:

1 x Pool PrimeLab 2.0 Photometer

1 x Grey plastic case with foam insert, 10 x 24mm|10ml glass cuvettes, 1 x light protection cap, 1x 24mm cuvette adapter, 2 x plastic stirring rod, 1 x 10ml syringe, 1 x cleaning brush, 1 x microfibre cloth, 1 x charger (USB type-C), 1 x printed manual

Parameters:

Active Oxygen, Alkalinity-M, Aluminium, Ammonium, Bromine, Chloramine, Chloride, Chlorine, Chlorine HR, Chlorine Dioxide, Copper, Cyanuric Acid, Calcium Hardness, Total Hardness, Hydrogen Peroxide, Iron, Manganese, Nitrate, Nitrite, Ozone, pH, PHMB, Phosphate, Potassium, Sulphate, Urea, Zinc

POOL PRIMELAB 2.0 PRO-KIT 2:

1 x Pool PrimeLab 2.0 Photometer

1 x Grey plastic case with foam insert, 10 x 24mm|10ml glass cuvettes, 1 x light protection cap, 1x 24mm cuvette adapter, 2 x plastic stirring rod, 1 x 10ml syringe, 1 x cleaning brush, 1 x microfibre cloth, 1 x charger (USB type-C), 1 x printed manual

Parameters:

Active Oxygen, Alkalinity-M, Aluminium, Ammonium, Bromine, Chloramine, Chloride, Chlorine, Chlorine HR, Chlorine Dioxide, Copper, Cyanuric Acid, Calcium Hardness, Total Hardness, Hydrogen Peroxide, Iron, Manganese, Nitrate, Nitrite, Ozone, pH, PHMB, Phosphate, Potassium, Sulphate, Urea, Zinc

Electrodes:

ProbeBox Electrode Starter Kit pH/Temp

REAGENTS | ACCESSORIES:

Select reagents according to the selected parameters.

Add accessories, e.g. more cuvettes, stirring rods, professional pipettes, adapters and much more.



WRITE TO US AT SALES@PRIMELAB.ORG AND TELL US YOUR DESIRED PARAMETERS.
WE WILL GLADLY SEND YOU AN INDIVIDUAL OFFER

WWW.WATER-ID.COM

WATER TESTING EQUIPMENT
MADE IN GERMANY